

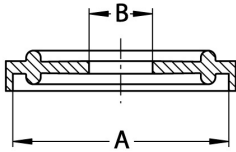
Klemmverbindung DIN 32676, Flansch Ø 34–319

| | | | |
|---------|-----|---------|-----|
| Art.Nr. | EUR | Art.Nr. | EUR |
|---------|-----|---------|-----|

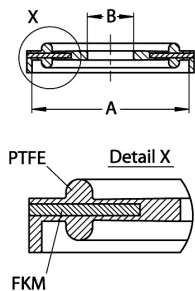
Klemmdichtung DIN

| DN | A | B | | | | VMQ | | VMQ USP VI | |
|-------|-----|-------|--|--|--|--------|---------|------------|---------|
| 250 * | 268 | 250,2 | | | | 220746 | Anfrage | 223946 | Anfrage |
| 300 * | 319 | 300,2 | | | | 220748 | Anfrage | 223948 | Anfrage |

* Ähnlich DIN 32676

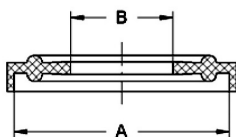


Klemmdichtung DIN, ummantelt



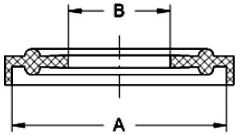
| DN | A | B | | | | PTFE-FKM | | PTFE-FKM USP VI | |
|-----|-------|-------|--|--|--|----------|-------|-----------------|---------|
| 10 | 34 | 10 | | | | 221830 | 11,40 | 224830 | Anfrage |
| 15 | 34 | 16 | | | | 221831 | 11,40 | 224831 | Anfrage |
| 20 | 34 | 20 | | | | 221832 | 11,40 | 224832 | Anfrage |
| 25 | 50,5 | 26 | | | | 221833 | 12,70 | 224833 | Anfrage |
| 32 | 50,5 | 32 | | | | 221834 | 12,70 | 224834 | Anfrage |
| 40 | 50,5 | 38 | | | | 221835 | 12,70 | 224835 | Anfrage |
| 50 | 64 | 50 | | | | 221836 | 13,20 | 224836 | Anfrage |
| 65 | 91 | 66 | | | | 221837 | 17,60 | 224837 | Anfrage |
| 80 | 106 | 81 | | | | 221838 | 18,70 | 224838 | Anfrage |
| 100 | 119 | 100 | | | | 221839 | 20,60 | 224839 | Anfrage |
| 115 | 130 | 109,7 | | | | 221809 | 22,00 | 224809 | Anfrage |
| 125 | 155 | 125 | | | | 221841 | 28,50 | 224841 | Anfrage |
| 150 | 183 | 150 | | | | 221842 | 37,80 | 224842 | Anfrage |
| 200 | 233,5 | 200 | | | | 221844 | 54,90 | 224844 | Anfrage |
| 250 | 268 | 250 | | | | 221846 | 71,50 | 224846 | Anfrage |
| 300 | 319 | 300 | | | | 221848 | 83,60 | 224848 | Anfrage |

Klemmdichtung ASME

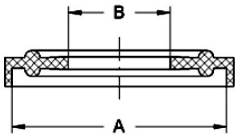


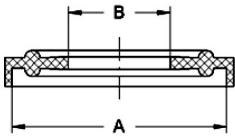
| DN | A | B | | | | EPDM | | EPDM USP VI | |
|--------|-------|-------|--|--|--|--------|-------|-------------|---------|
| 1" | 50,5 | 23,1 | | | | 225703 | 1,30 | 225603 | Anfrage |
| 1,5" | 50,5 | 35,3 | | | | 225704 | 1,30 | 225604 | Anfrage |
| 2" | 64 | 48 | | | | 225705 | 1,70 | 225605 | Anfrage |
| 2,5" | 77,5 | 60,7 | | | | 225706 | 2,30 | 225606 | Anfrage |
| 3" | 91 | 73,1 | | | | 225707 | 2,80 | 225607 | Anfrage |
| 4" | 119 | 97,8 | | | | 225708 | 4,30 | 225608 | Anfrage |
| 4,5" * | 130 | 110,5 | | | | 225709 | 11,50 | 225609 | Anfrage |
| 5,5" * | 155 | 135,9 | | | | 225710 | 13,10 | 225610 | Anfrage |
| 6,6" * | 183 | 163,3 | | | | 225711 | 15,40 | 225611 | Anfrage |
| 8,6" * | 233,5 | 214,1 | | | | 225712 | 18,30 | 225612 | Anfrage |

* Ähnlich DIN 32676

| Klemmverbindung DIN 32676, Flansch Ø 34–319 | | | | | | Art.Nr. | EUR | Art.Nr. | EUR |
|--|--------|-------|-------|--|--------|---------|--------|------------|---------|
| Klemmdichtung ASME  | DN | A | B | | | FKM | | FKM USP VI | |
| | 1" | 50,5 | 23,1 | | | 225903 | 4,60 | 224303 | Anfrage |
| | 1,5" | 50,5 | 35,3 | | | 225904 | 4,60 | 224304 | Anfrage |
| | 2" | 64 | 48 | | | 225905 | 5,50 | 224305 | Anfrage |
| | 2,5" | 77,5 | 60,7 | | | 225906 | 7,80 | 224306 | Anfrage |
| | 3" | 91 | 73,1 | | | 225907 | 9,40 | 224307 | Anfrage |
| | 4" | 119 | 97,8 | | | 225908 | 11,90 | 224308 | Anfrage |
| | 4,5" * | 130 | 110,5 | | | 225909 | 16,70 | 224309 | Anfrage |
| | 5,5" * | 155 | 135,9 | | | 225910 | 22,30 | 224310 | Anfrage |
| | 6,6" * | 183 | 163,3 | | | 225911 | 25,40 | 224311 | Anfrage |
| 8,6" * | 233,5 | 214,1 | | | 225912 | 34,70 | 224312 | Anfrage | |

* Ähnlich DIN 32676

| Klemmdichtung ASME  | DN | A | B | | | PTFE | | PTFE USP VI | |
|--|-------|-------|-------|--|--------|--------|--------|-------------|---------|
| | 1" | 50,5 | 22,1 | | | 225403 | 9,60 | 226003 | Anfrage |
| | 1,5" | 50,5 | 34,8 | | | 225404 | 9,60 | 226004 | Anfrage |
| | 2" | 64 | 47,5 | | | 225405 | 10,60 | 226005 | Anfrage |
| | 2,5" | 77,5 | 60,2 | | | 225406 | 14,30 | 226006 | Anfrage |
| | 3" | 91 | 72,8 | | | 225407 | 16,20 | 226007 | Anfrage |
| | 4" | 119 | 97,38 | | | 225408 | 19,70 | 226008 | Anfrage |
| | 4,5" | 130 | 109,7 | | | 225409 | 21,30 | 226009 | Anfrage |
| | 5,5" | 155 | 134,5 | | | 225410 | 27,40 | 226010 | Anfrage |
| | 6,6" | 183 | 163,1 | | | 225411 | 35,90 | 226011 | Anfrage |
| 8,6" | 233,5 | 213,9 | | | 225412 | 49,40 | 226012 | Anfrage | |

| Klemmdichtung ASME  | DN | A | B | | | VMQ | | VMQ USP VI | |
|--|--------|-------|-------|--|--------|--------|--------|------------|---------|
| | 1" | 50,5 | 23,1 | | | 225803 | 1,40 | 224003 | Anfrage |
| | 1,5" | 50,5 | 35,3 | | | 225804 | 1,40 | 224004 | Anfrage |
| | 2" | 64 | 48 | | | 225805 | 1,90 | 224005 | Anfrage |
| | 2,5" | 77,5 | 60,7 | | | 225806 | 2,80 | 224006 | Anfrage |
| | 3" | 91 | 73,1 | | | 225807 | 3,20 | 224007 | Anfrage |
| | 4" | 119 | 97,8 | | | 225808 | 4,80 | 224008 | Anfrage |
| | 4,5" * | 130 | 110,5 | | | 225809 | 13,60 | 224009 | Anfrage |
| | 5,5" * | 155 | 135,9 | | | 225810 | 15,70 | 224010 | Anfrage |
| | 6,6" * | 183 | 163,3 | | | 225811 | 18,30 | 224011 | Anfrage |
| 8,6" * | 233,5 | 214,1 | | | 225812 | 25,50 | 224012 | Anfrage | |

* Ähnlich DIN 32676